



Flooring & Carpet Tiles Catalog

Welcome to Our Collection

Discover our wide premium *selection of broadloom, carpet tile, and LVT in-stock* and stylish designed to suit residential and commercial spaces. *Most orders ship within 24 hours. Check out which products are ready for your project-*

NOTE: Colors may vary from screen monitor. Please request sample first if needed.





Laminate Flooring

Riverwood PureGrain

Riverwood is the first release of our EF Luxury Waterproof Flooring (LWF) product line. All Luxury Waterproof Flooring products with AquaEdge™ allow the products to be installed using a waterproof installation method by sealing the perimeter expansion gaps with waterproof caulk. Riverwood has superior scratch resistance, stain resistance & resistance to fade when exposed to light with fast installation benefits.

Specifications:

- Style Number: D040
- Colors: 2
- Size: 19.30 cm X 138.30 cm
- Embossing: Random Texture
- Total Thickness: 7.0mm
- Abrasion Rating: AC4
- Construction: High Density Laminate Core
- Underlayment: no pad
- Edge: Angle Tap
- Surface Coating: Melamine with Aluminum Oxide
- Available Moldings: Reducer, Quarter Round, T-Mold, End Cap, Stair Nose

Samples & Colors



Warranty:

- Residential Warranty: Limited Lifetime
- Commercial Warranty: 5 Year Light
- Waterproof Warranty: Lifetime





Vinyl Flooring (LVT):

Overlook V5024

Specifications:

- Thickness: 2.5mm
- Wear Layer: 20 mil
- Finish / Coating: Enhanced UV Urethane w/ Ceramic Bead
- Nominal Dimensions: 15.24 cm X 122 cm
- Pattern: Random Wood Pattern
- Commercial Traffic: Heavy Commercial
- Standard Warranties: 15 Year LVT Warranty





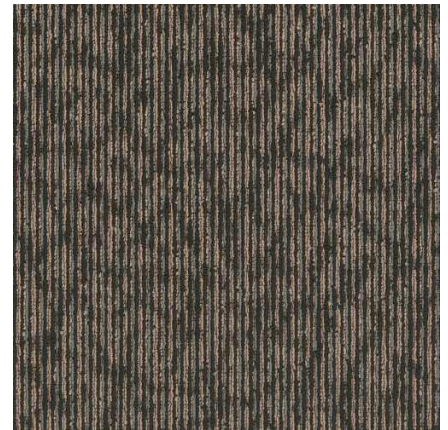
Carpet Tiles Collection:

Fanfare Tile

Fanfare is an Apex SDP Polyester carpet with a unique design reminiscent of naturally formed ivy. This carpet tile's colors can be mix-matched to create a one-of-a-kind masterpiece.

Specifications:

- Construction: Pattern Loop
- Backing: Nexus® Modular
- Dye Method: Solution Dyed
- Fiber Type: Encore® APEX SDP Polyester
- Face Weight: 543 g/m²
- Pile Density: 6229
- Thickness: (7 mm)
- Pattern Repeat: N/A
- Gauge: 1/12
- Size: 60.96 cm x 60.96 cm



Testing:

- Radiant Panel: Class I (ASTM E-648)
- Smoke Density: < 450 (ASTM E-662)
- Static Control: < 3.5 kV (AATCC-134)
- Antimicrobial: Passes (AATCC-174)
- ADA Compliance: Meets guidelines for minimum static coefficient of friction of 0.6 for accessible routes

Environmental Certification:

- Indoor Air Quality: GLP9716
- CRI Green Label Plus

Warranties (Lifetime):

Performance for Wear

Fiber Performance for Static

Stain Removal





Modular Carpet Tile – Pentz

Specifications:

- Construction: Textured Loop
- Backing: Nexus® Modular
- Dye Method: Solution Dyed
- Fiber Type: Apex SDP® Polyester
- Fiber Weight: 508.65 g/m²
- Pile Density: 5133
- Product Size: 60.96 cm × 60.96 cm
- Gauge: 1/10
- Total Thickness: 7.0 mm
- TARR: 3.0

Specifications & Tests:

Indoor Air Quality: GLP2526

Pill Test: Passes

Flooring Radiant Panel: Class 1 (ASTM E-648)

Smoke Density: Less Than 450 (ASTM E-662)

Static Test: Less Than 3.5 kV (AATCC-134)

Lightfastness: Passes

Warranties:

Lifetime Nexus® modular dimensional stability

Lifetime fiber performance for static

Lifetime stain removal

Lifetime colorfastness to light and atmospheric contaminants

Lifetime tuft bind strength (edge ravel, yarn pulls, zippering)

Lifetime against delamination





Integrity Tile– Pentz

Specifications:

- Color: Prescript
- Construction Patterned loop
- Backing: Nexus® modular
- Dye Method: Solution Dyed
- Fiber Type: Encore®SD Ultima® Nylon
- Face Weight: 678 g/m²
- Pile Density: 6668
- Finished Pile Thickness: 7 mm
- Pattern Repeat: n/a
- Gauge: 1/12
- Standard Size: 61X61

Testing:

Radiant Panel: Class I (ASTM E-648)

Smoke Density: < 450 (ASTM E-662)

Static Control: < 3.5 kv (AATCC-134)

Antimicrobial: Passes (AATCC-174)

ADA Compliance: This product meets the guidelines

Environmental Certification

Indoor Air Quality: GLP9716

CRI Green Label Plus

Recommended Adhesives:

Commercialon® Modular Adhesive

Commercialon® Premium Carpet Adhesives

Commercialon® Seam Sealer

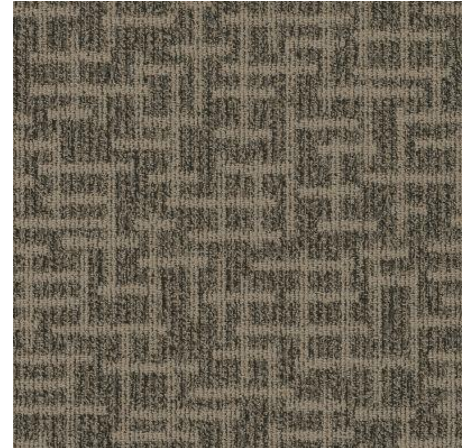
Warranties

Lifetime Performance for Wear

Lifetime Fiber Performance for Static

Lifetime Stain Removal

Lifetime Colorfastness to Light and Atmospheric Contaminants





Verge by EF Contract

Specifications:

- Style Name / Number: Verge / TVRG
- Construction: Patterned Scroll
- Backing: Nexus® Modular
- Fiber: Encore® SD Ultima®
- Dye Method: Solution Dyed Nylon
- Face Weight: 475 g/m²
- Pile Density: 5929 oz./yd³
- Gauge: 1/12
- Stitches Per Inch: 9.66
- Pattern Repeat: N/A
- Standard Size: (≈ 61 cm x 61 cm)
- Total Thickness: 6 mm

Adhesive: Commercialon Premium Modular and LVT Adhesive



Environmental Features

LEED Contribution: Eligible

NSF 140 Certification: Gold

Recycled Content: 49.08%

Antimicrobial (ProSept®): Optional

Soil Release (ProTex®): Standard

Odor Blocker (Sentir®): Optional



Safety & Compliance

Flammability (ASTM E648): Class 1

Smoke Density (ASTM E662): < 450

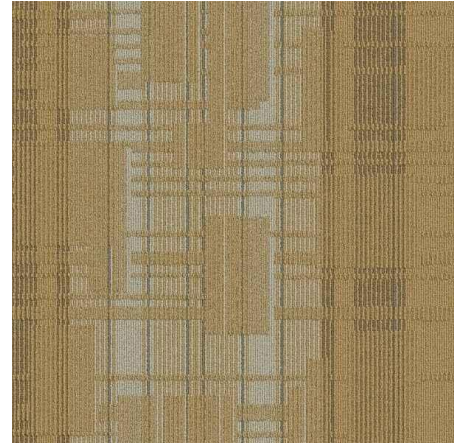
Flaming

Static Control (AATCC-134): < 3 kV

Pill Test: Pass

ADA Compliant: Yes

Lightfastness: Yes



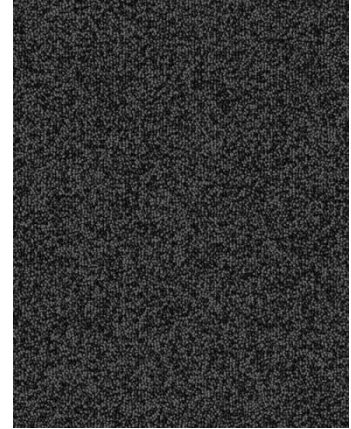
 **EF Contract**



Alfa 702

Specifications:

- Construction: Loop
- Pile Fiber Composition: 100% Olefin
- Yarn Type: BCF
- Dye Method Solution Dyed
- Pile Weight: 550 g/m²
- Number of tufts: 244280/m²
- Tufting Gauge: 1/10"
- Primary Backing: Non-Woven
- Secondary Backing Stable Shield- 100% Vinyl
- Tile Size: 50 cm x 50 cm
- Pile Height: 3.5 mm (+/-5%)
- Total Height: 6.5 mm (+/-5%)
- Pile Treatment Walk of Fame, Anti-Microbial (Optional)



Standard
CARPETS

Easy to use, easy to fit, easy to clean and to maintain.

Extremely durable carpets, water absorbent, stain resistant, and extremely easy to clean

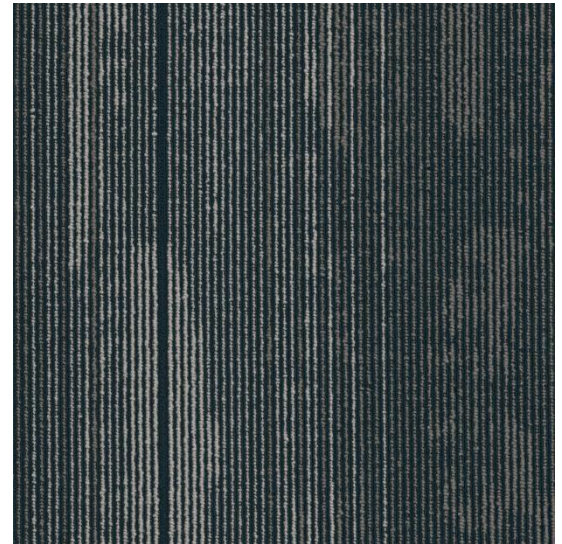




Fast Track 7578

Specifications:

- Construction: Patterned Loop
- Standard Backing: Nexus® Modular
- Dye Method: Solution Dyed
- Fiber Type: TeraPlex SD™ PET
- Face Weight: 543 grams/sqm
- Thickness: 6.35 mm
- Standard Size: 45.72cm x 91.44cm



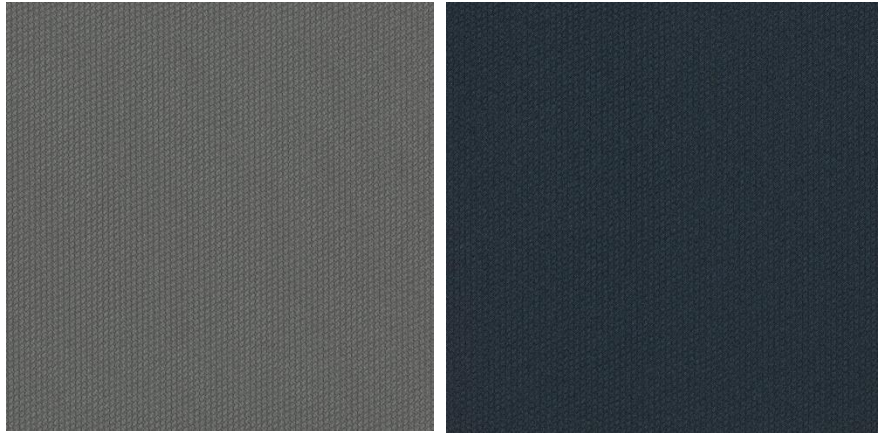


Kinetex

Accelerate 1593 & Propel II 2375

Specifications:

- Construction: Textile Composite
- Wear Layer: 100% Solution Dyed Polyester
- Dye Method Solution Dyed
- Pattern Repeat: N/A
- Face Weight: 407 grams/m²
- Total Thickness: 5.50 mm
- Dimensions: 60cm X 60cm
- Standard Adhesive: Kinetex Adhesive





R2PM 2070 – Carpet Tile

Specifications:

- Construction: Multi-level loop
- Color: Blue with Linear Stripe Pattern
- Size: 61 cm × 61 cm
- Fiber Type: 100% Solution-Dyed Nylon
- Total thickness: 7.0 mm
- Patterned loop pile for texture and wear resistance
- Backing System: TitanBac® Plus or Infinity® Modular
- Suitable for offices, workstations, conference rooms, and retail spaces



Warranty:

- Commercial warranty up to 15 years
- Stain resistance and colorfastness included
- CRI Green Label Plus certified (low VOC)

Installation Method:

- Monolithic / Quarter Turn / Ashlar (depending on design)
- Glue-down or adhesive tab installation

Environmental Certification:

- LEED v4 eligible
- Cradle to Cradle Certified™ (select models)
- NSF/ANSI 140 Platinum (for sustainable carpet)





Residential Carpet:

- Brand: Engineered Floors – Dream Weaver
- Style: Confetti & Can't miss & Acclaim
- Style Type: Texture
- Par Rating: 3.5
- Yarn: 100% PureColor® Soft Solution Dyed BCF Polyester
- Face Weight: 60 oz. (1360 gm/sqm)
- Gauge: 1/8
- Density: 2660
- Finished Pile Thickness: 26/32" (18.40 mm)



Warranty:

- Texture Retention Warranty: 25 Year
- Fade Resistance Warranty: Lifetime
- Pet Stain Warranty: Lifetime
- Manufacturer Defects Warranty: 25 Year
- Wear Warranty: 25 Year
- Soil Warranty: 25 Year
- Stain Resistance Warranty: Lifetime





Contact & Ordering

Contact Us:

Luxe Interiors Jordan

Phone: +96279062009

Email: info@luxejordan.com

Website: www.luxejordan.com

Showroom Location: 250 Wasfi Al Tal Street, beside Al Soudi Hospital / Khalda - Amman Jordan.